



Ready or Not 2024

Congressional Briefing
and National Webinar

May 29, 2024
2:00 – 3:00 PM Eastern Time

X@HealthyAmerica1
 tfah.org

ISSUE REPORT

Ready or Not:

PROTECTING THE PUBLIC'S HEALTH FROM
DISEASES, DISASTERS,
AND BIOTERRORISM **2024**

*SPECIAL SECTION on the health impacts of extreme heat
and its disproportionate risk for some populations*



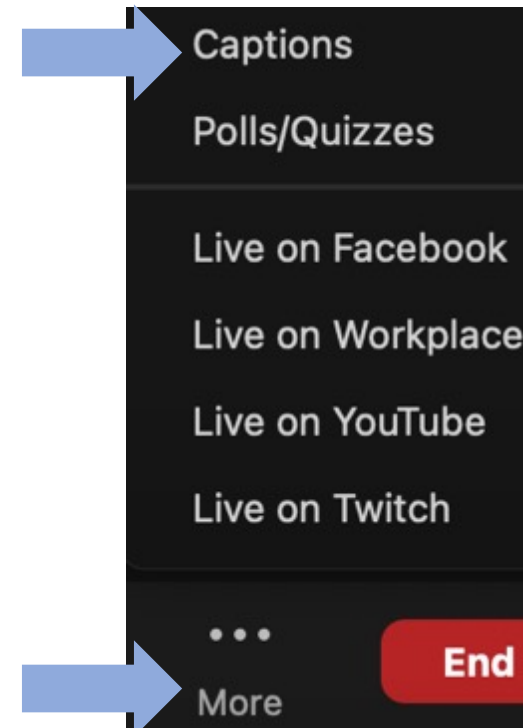
MARCH 2024



Closed Captioning

To see real time captioning:

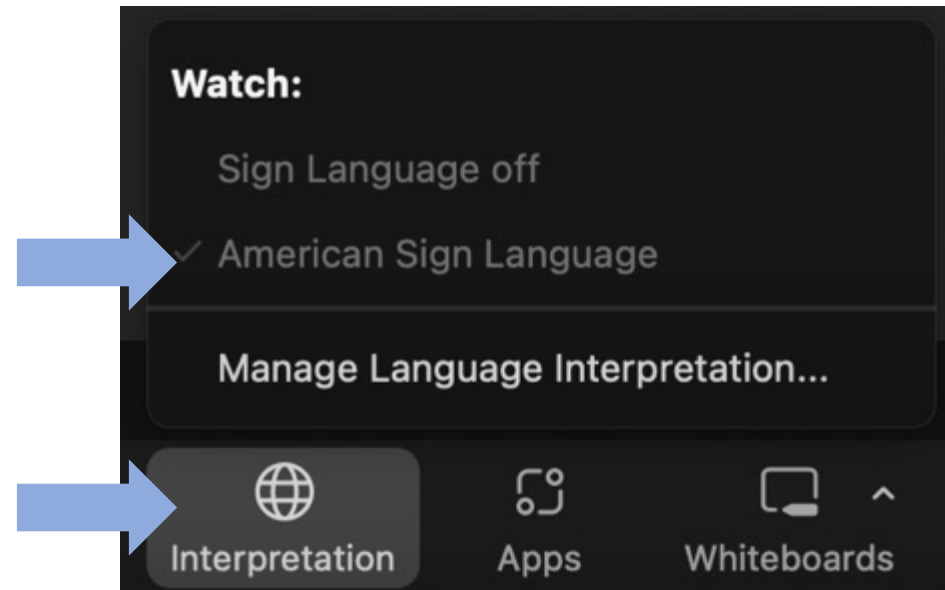
1. At the bottom of your screen, click to open **More**
2. Click **Closed Caption**



ASL Interpreting

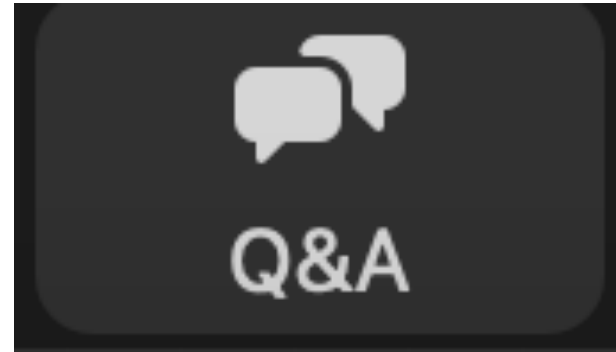
To see real time captioning:

1. At the bottom of your screen, click **Interpretation**
2. Select **American Sign Language**



Q&A Feature

1. At the bottom of your screen, click to open the Q&A panel
2. Type your question in the Q&A box
3. Hit Enter



Moderator



J. Nadine Gracia, M.D., MSCE
President and CEO
Trust for America's Health

tfah.org

Agenda

Welcome and overview of 2024 *Ready or Not* report

Presentations from panelists

Questions and Answers

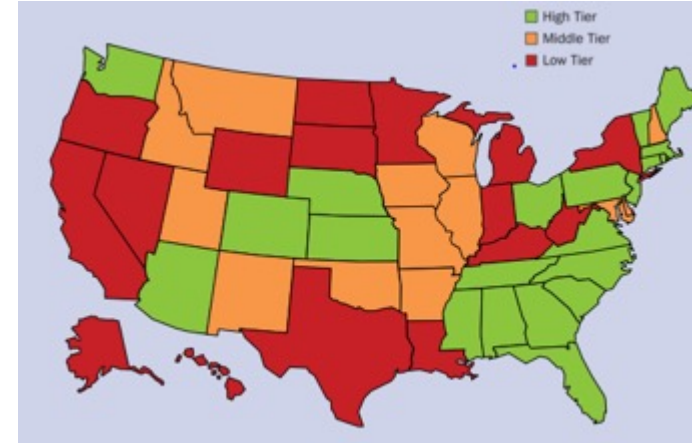
Closing



Ready or Not Report 2024

2024 State Emergency Preparedness Performance:
High, Middle, and Low

- Examines the country's level of public health emergency preparedness on a state-by-state basis using key indicators
- Highlights the health impacts of extreme heat
- Focuses on recommended policy action in seven priority areas



Ready or Not 2024

Key State Findings

- Notable increase in states joining Nurse Licensure Compact since 2017
- All states have public health laboratory surge plans
- 29 states accredited in both public health and emergency management
- 11 states reduced public health funding
- Recent decline in seasonal flu vaccination rates
- Use of paid time off (PTO) among workers varies across states
- Only 25 percent of U.S. hospitals on average earned an “A” grade for patient safety
- Most U.S. residents have access to safe drinking water



Highlights of Recent Progress



- New countermeasures to prevent RSV in high-risk groups
- Establishment of Office of Pandemic Preparedness and Response Policy
- Creation of Office of Long COVID Research and Practice
- FEMA Community Disaster Resilience Zones designations
- New tools to prevent heat risks at heat.gov and NWS HeatRisk
- Billions of dollars provided for public health infrastructure
- Launch of Insight Net disease forecasting network
- Investigations contained impact of lead in applesauce, eye drop contamination, foodborne outbreaks



Boom and Bust Cycle of Public Health

1 Underfunding

Public health receives little funding because there is no emergent public health threat

2 Crisis

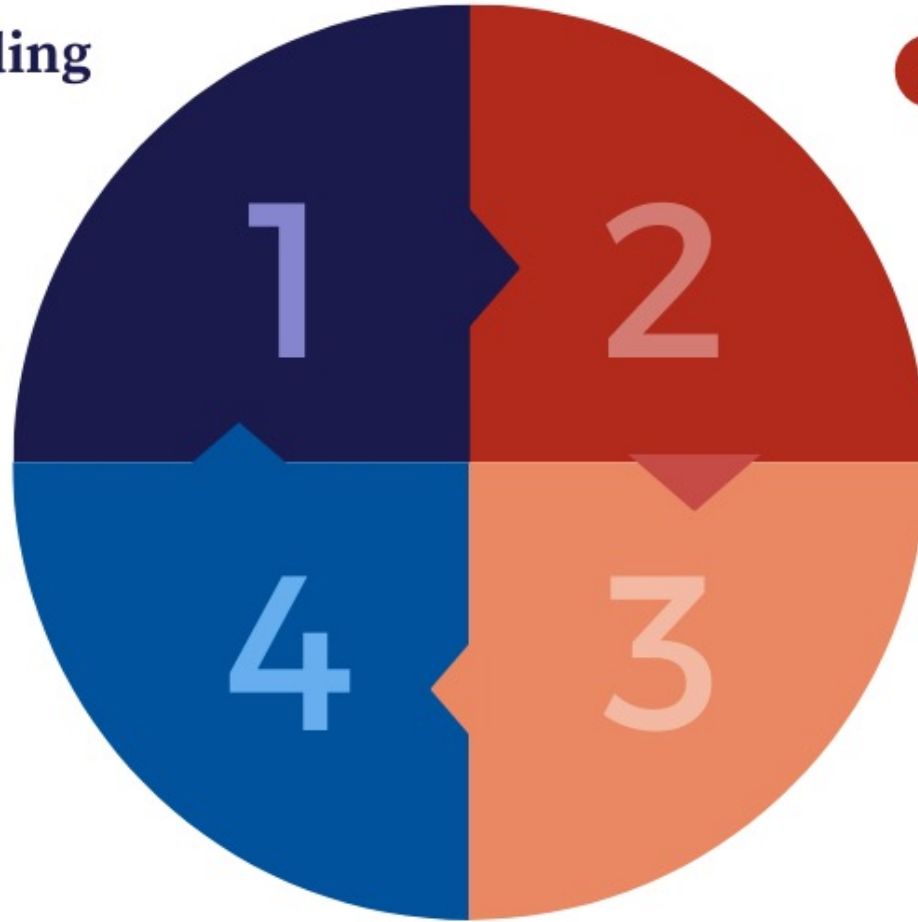
Public health system faces an acute public health threat

4 Crisis "Solved"

Acute public health mitigated. Emergency funding disappears

3 Funding Increase

Policymakers increase public health funding to respond to crisis



Ready or Not 2024

Special Feature: Health and Extreme Heat

Some population groups are at heightened risk, including:

- Pregnant people
- Infants and Young Children
- Older Adults
- Indigenous Populations
- People Who Live in Public Housing or Urban Heat Islands
- People Who Work Outdoors
- People with Behavioral Health Conditions or Disabilities
- People Living with Chronic Disease



Ready or Not 2024 Policy Recommendations

Strengthening the Foundation

- Build strong public health infrastructure & workforce
- Invest in continuous public health data modernization
- Improving Data in Public Health Act
- Fund public health emergency preparedness
- Invest in next-generation disease detection (Center for Forecasting, Advanced Molecular Detection)
- Strengthen public health communications
- Bolster ATSDR for effective emergency responses
- Enact Pandemic & All-Hazards Preparedness Act



Ready or Not 2024 Policy Recommendations

Preventing and Responding to Outbreaks

- Support vaccine infrastructure, coverage and access
- Pass job-protected paid leave
- Invest in new antibiotics, prevention of antimicrobial resistance
- Medical Countermeasures development, distribution
- Pass Influenza Act for vaccine development, prevention, and response

Resilient Communities

- Embed equity into incident management, readiness, response
 - Address social determinants of health
 - Provide resources for meaningful community engagement
-



Ready or Not 2024

Healthcare Readiness

- Fund Health Care Readiness & Response, address gaps
- Strengthen pediatric readiness, surge standards
- Assess effectiveness of CMS measures

Environmental Threats

- Improve indoor air quality standards in public spaces
 - Fund heat initiatives, such as National Integrated Heat Health Information System
 - Invest across CDC's National Center for Environmental Health
 - Strengthen clean water standards
-



Thank you!

Full report is available at www.tfah.org/report-details/ready-or-not-2024/

info@tfah.org

@HealthyAmerica1

www.tfah.org



Welcome to Our Panelists



Jane Gilbert
Chief Heat Officer
Miami-Dade County
Office of Resilience



**Raynard Washington, Ph.D.,
MPH**
Public Health Director
Mecklenburg County
NC Public Health



**L. Brannon Traxler, M.D.,
MPH**
Director of Health Promotion and
Services & Chief Medical Officer
South Carolina Department of
Health & Environmental Control



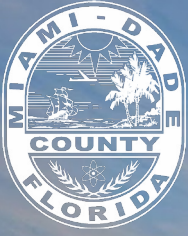


Jane Gilbert

Chief Heat Officer

Miami-Dade County Office of Resilience

miamidade.gov/heat



Addressing the Health and Economic Impacts of Extreme Heat

May 29, 2024

Jane Gilbert, Chief Heat Officer, Miami-Dade County

Today's Talk

- The Why and What of a Chief Heat Officer
- How extreme heat is impacting lives and livelihoods of people in Miami-Dade
- Overview of the Extreme Heat Action





Background: Currently in Miami



Risks to human health and wellbeing are **INCREASING**

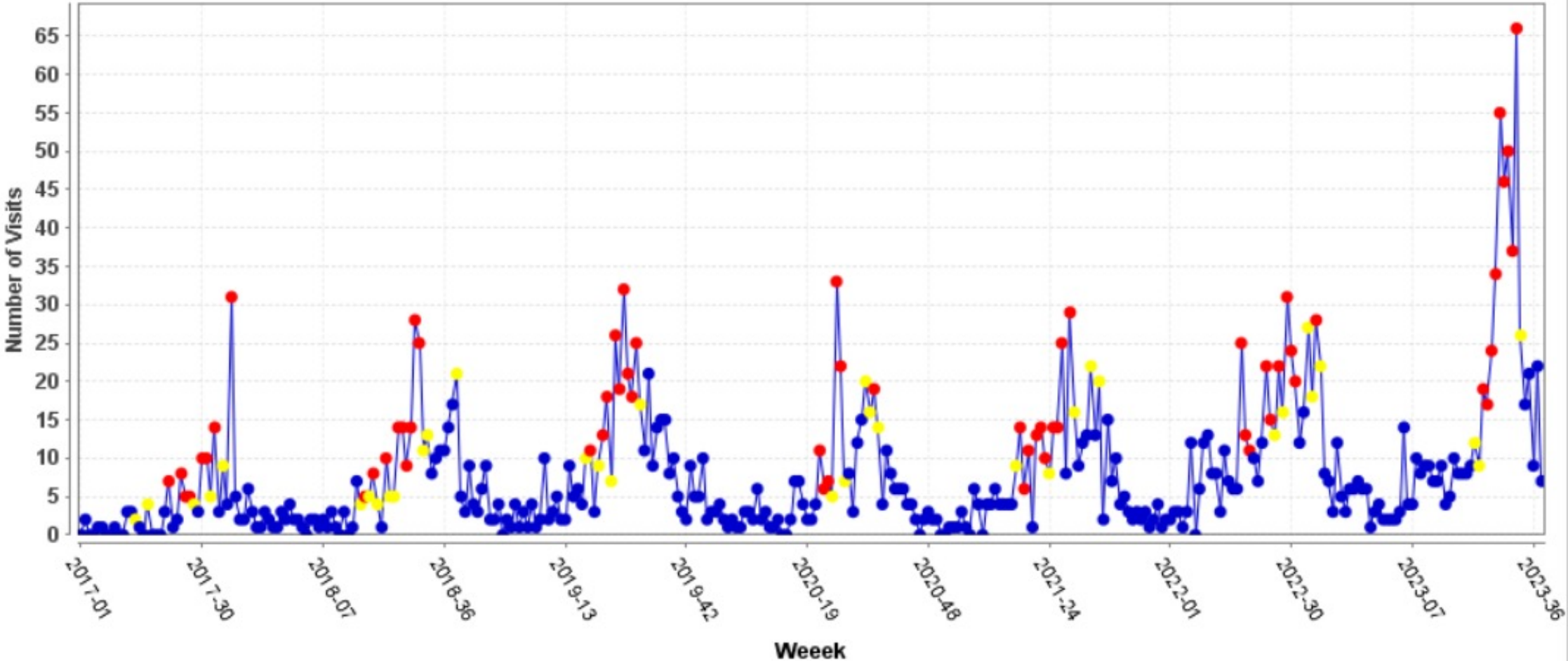


MIAMI-DADE COUNTY

Heat Index above	Historical (1971-2000)	By midcentury (2036-2065)	By late century (2070-2099)	By late century, if we limit warming to 2°C (2070-2099)
90°F -----	154 days	187 days	200 days	183 days
100°F -----	41 days	134 days	166 days	115 days
105°F -----	7 days	88 days	138 days	60 days
Off the Charts	0 days	1 days	14 days	0 days

Summer 2023 was unprecedented

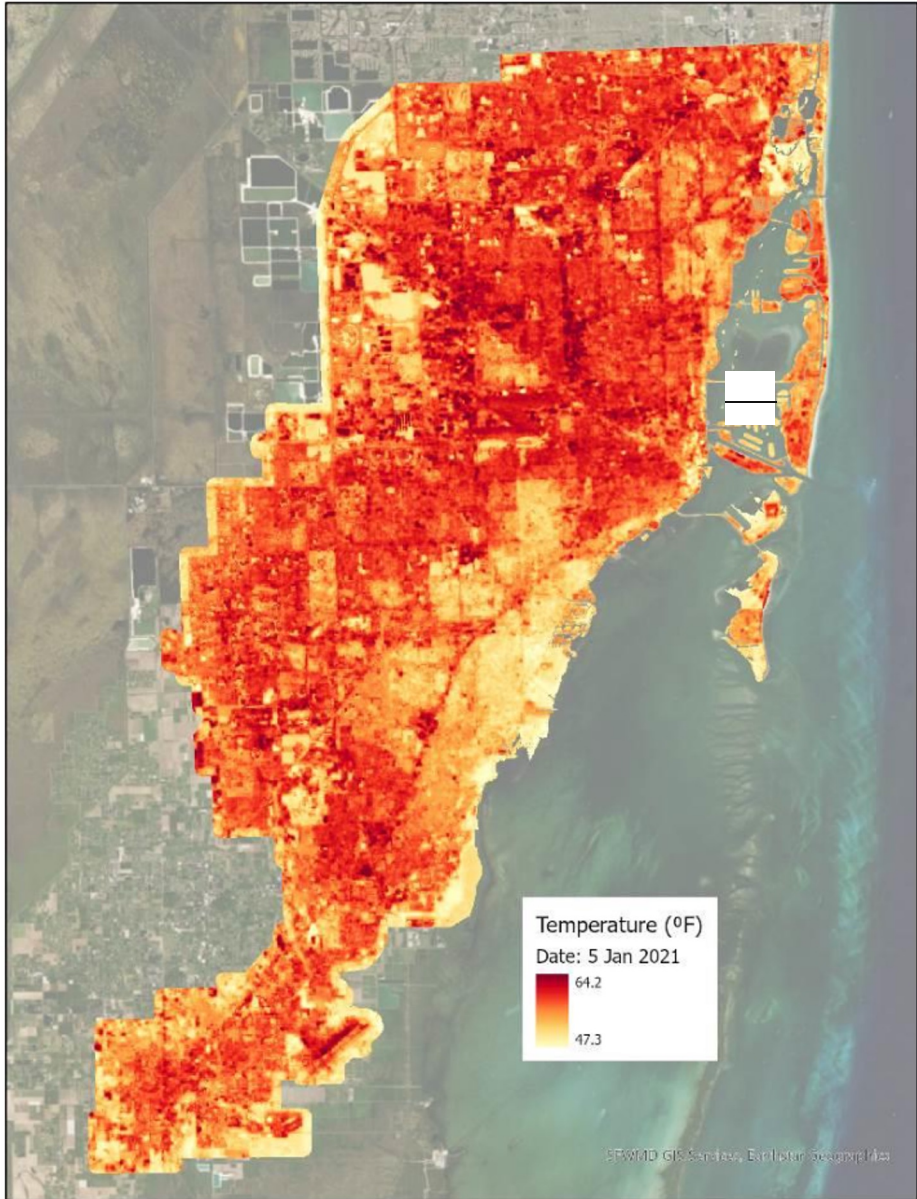
Heat-Related Illness by Week, Miami-Dade County, Emergency Department Data



■ Data: Normal ■ Data: Warning ■ Data: Alert

Total Count: 2840 / Average: 8.1

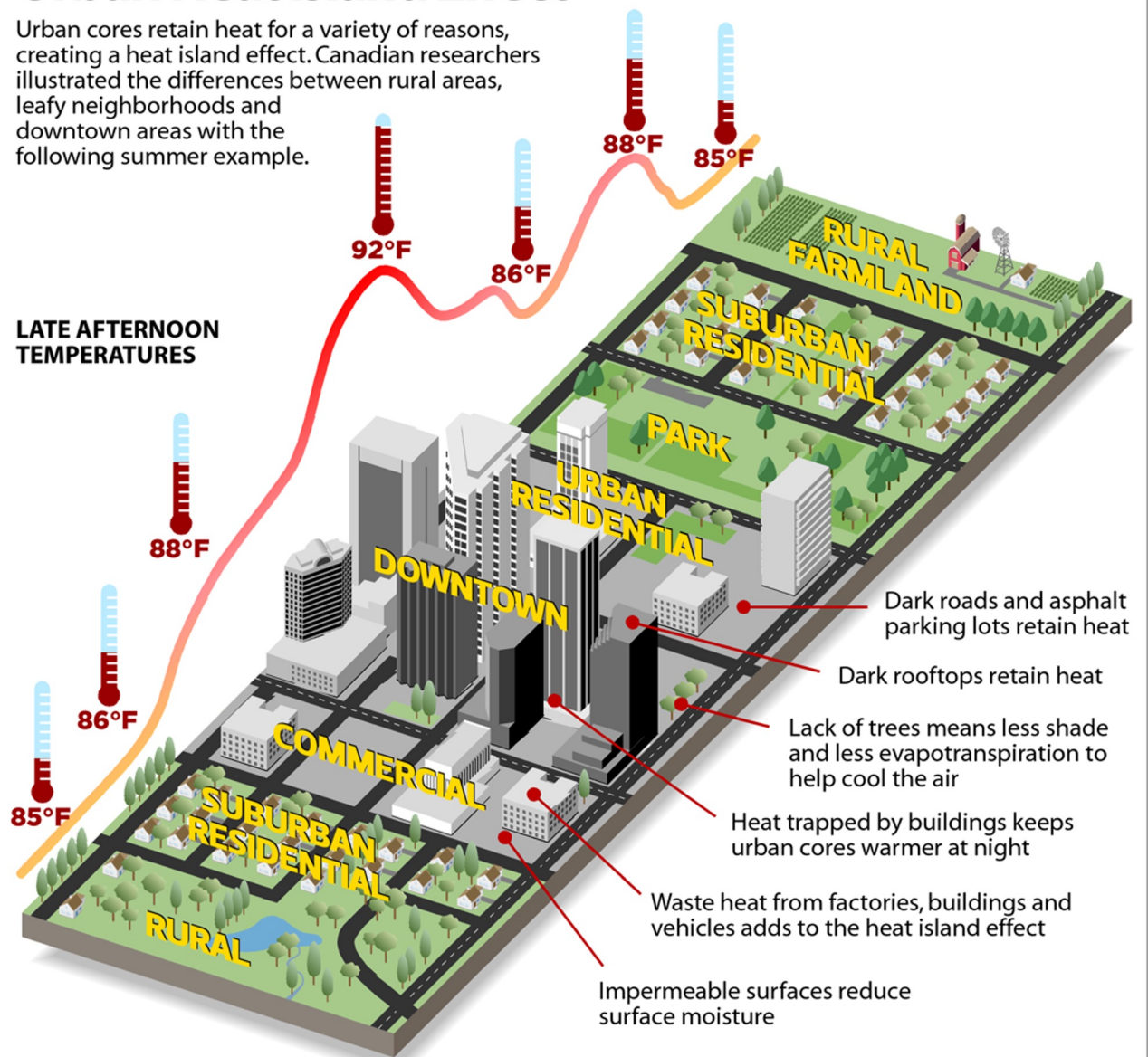
[Graph Options](#) [Download](#) [Add Event](#)



Urban Heat Island Effect

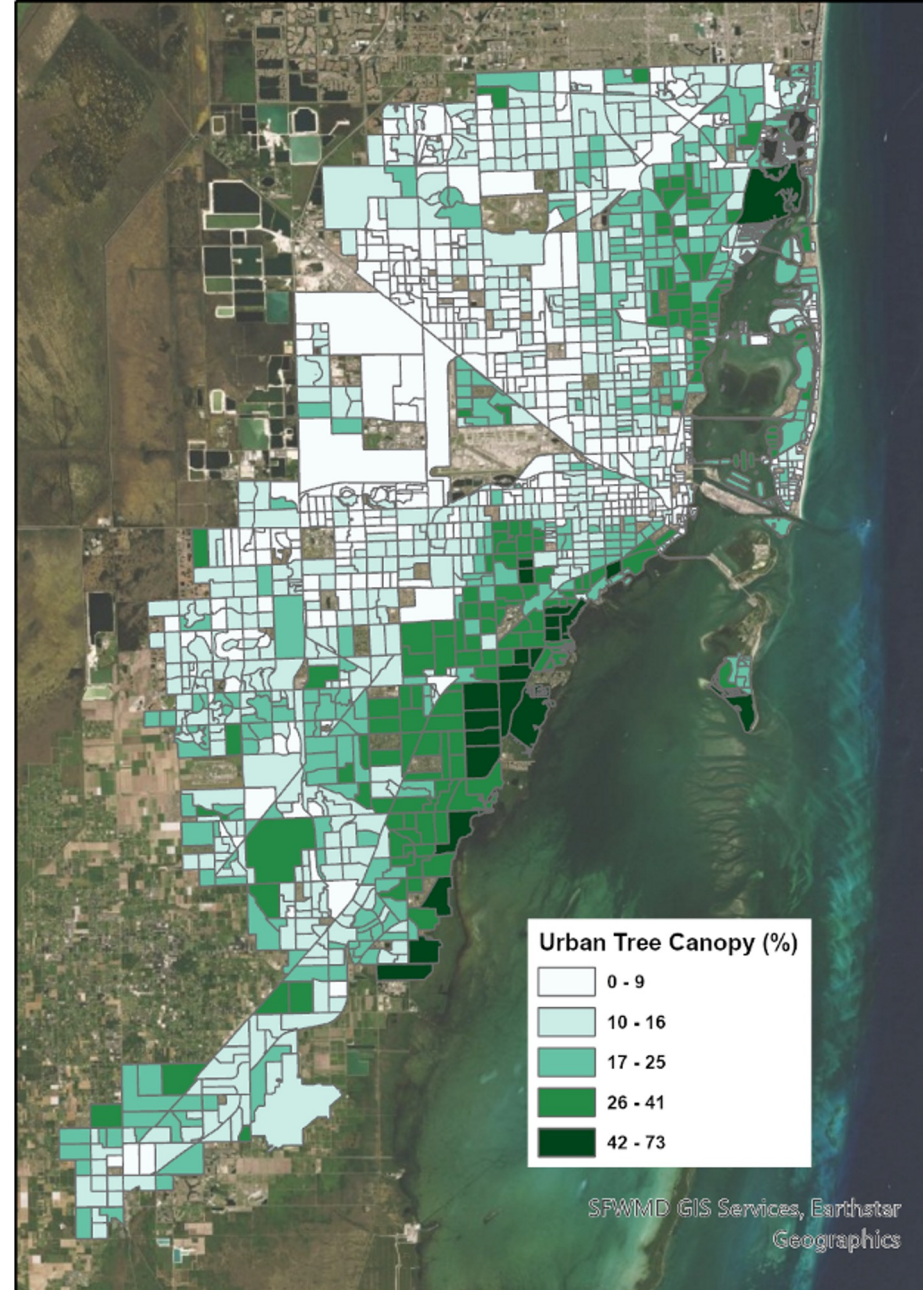
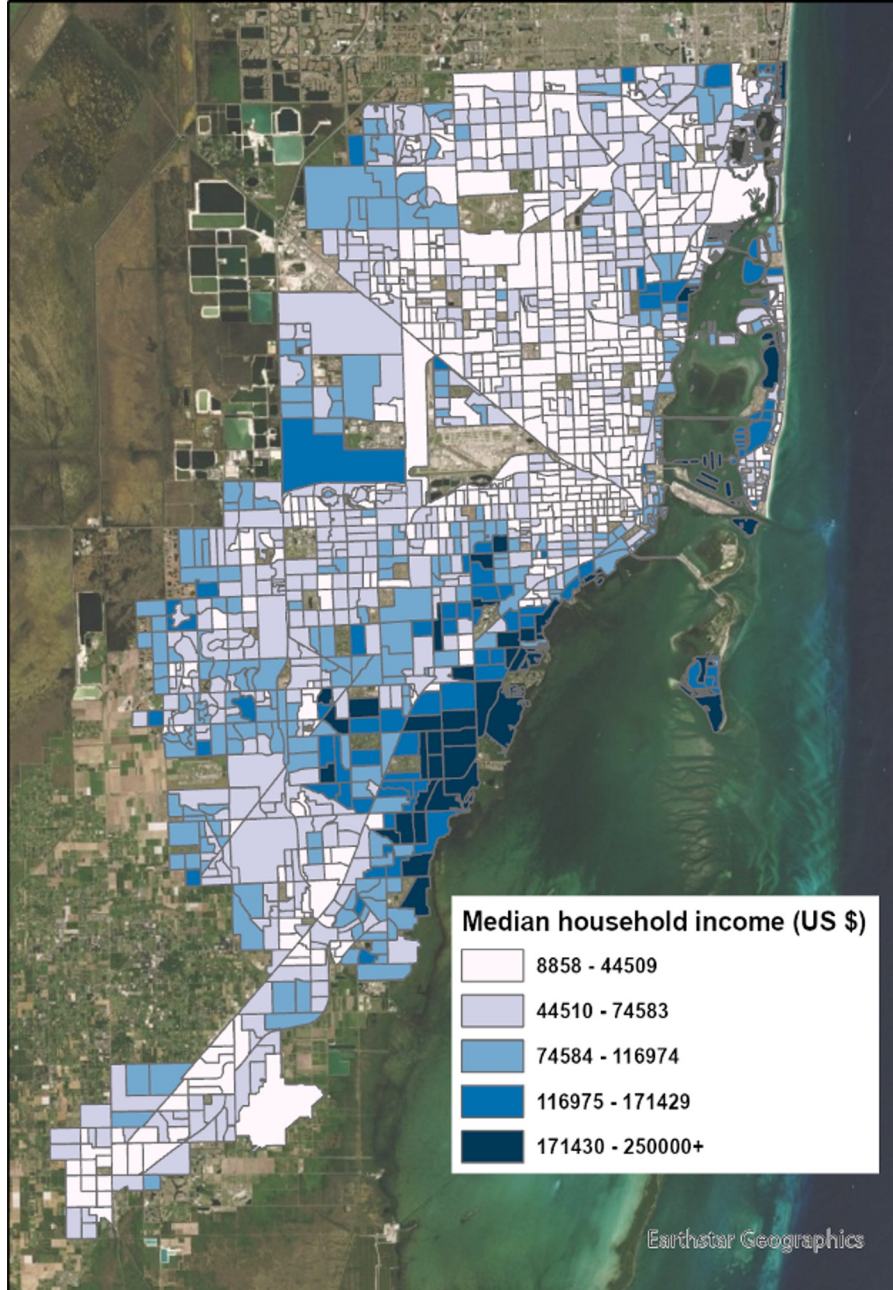
Urban cores retain heat for a variety of reasons, creating a heat island effect. Canadian researchers illustrated the differences between rural areas, leafy neighborhoods and downtown areas with the following summer example.

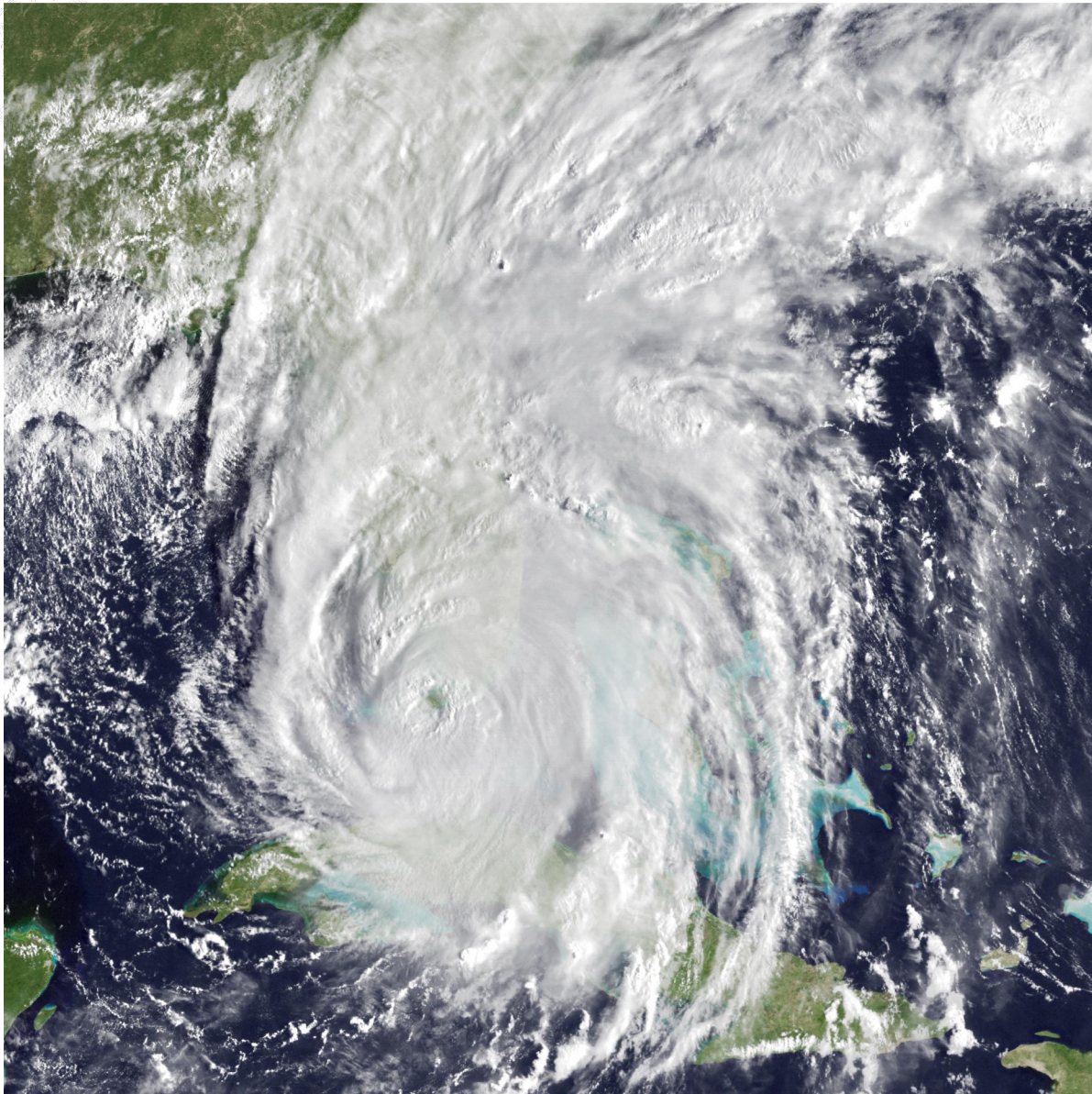
LATE AFTERNOON TEMPERATURES



SOURCE: D.S. Lemmen and F.J. Warren, Climate Change Impacts and Adaptation

PAUL HORN / InsideClimate News



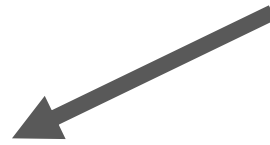




Heat Vulnerability Study - Populations at Risk in Miami-Dade

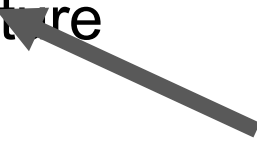
Hospitalizations

- % Living in Poverty
- % Mobile Homes



Emergency Department Visits

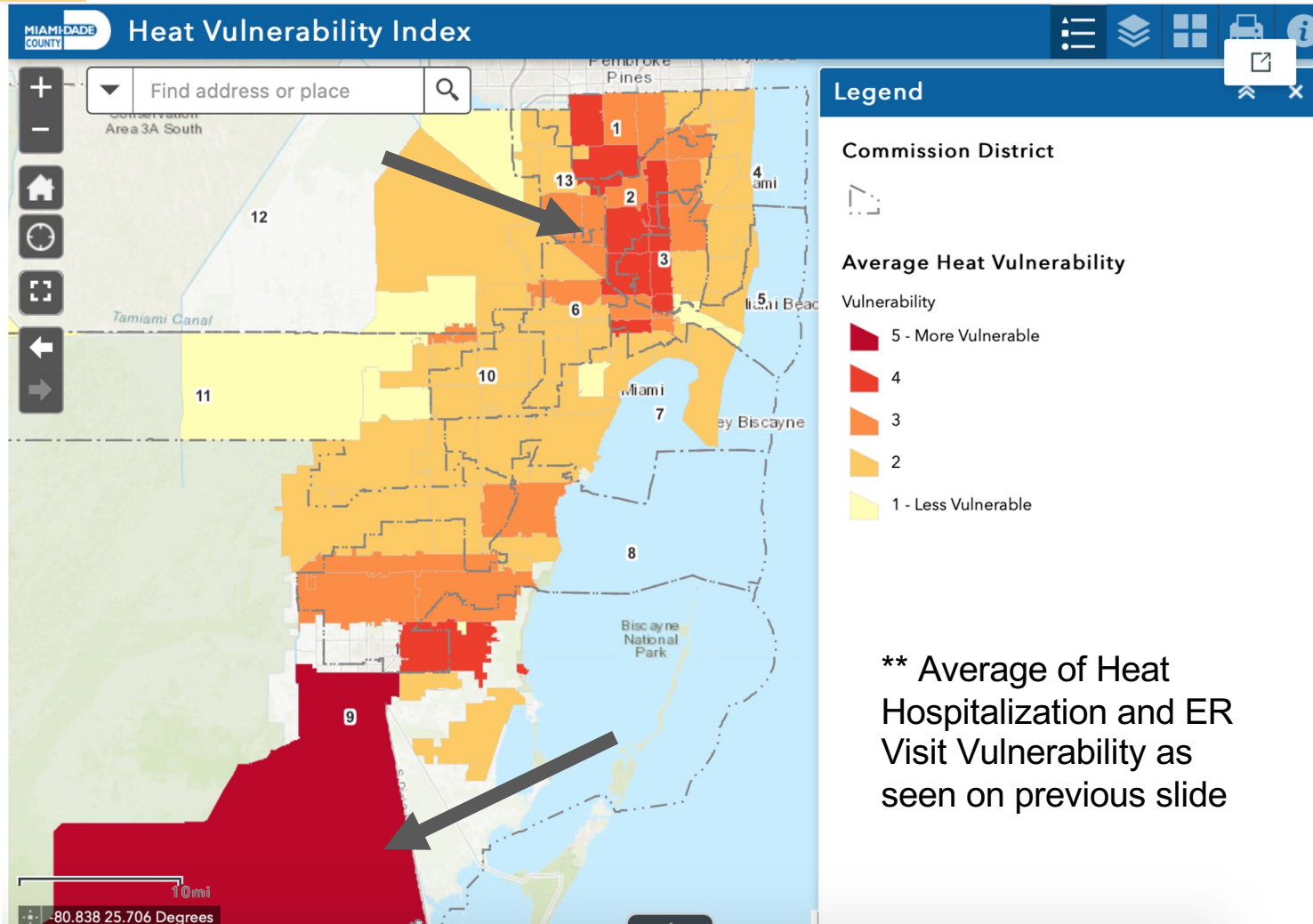
- Daytime surface temperature
- % Outdoor Workers
- % Age less than 18



Category	Description of Data	Provider
Health Outcome	Heat Related Illness Emergency Department	FDOH
	Heat Related Illness Hospitalizations	FDOH
Exposure	Land Surface Temperature	NASA
	% Impervious Surface	NLCD (2019)
Sensitivity	% Older Adults (age > 65)	US Census
	% Living Alone	US Census
	Children 0-5	US Census
	% Living in Poverty	US Census
	Household Income	US Census
	% Limited Language Proficiency	US Census
	% African American	US Census
	% Hispanic	US Census
	% Indigenous	US Census
	% Mobile Homes	US Census
	% High School Education	US Census
	% Outdoor Workers (Agr, Forestry, Fish, Mining, Construction)	US Census
	% Female Head of Housing	US Census



ArcGIS StoryMap: Vulnerability



- Interact with the Heat Vulnerability Index web mapping application to identify vulnerable zip codes in Miami-Dade
- Homestead, Florida City, Hialeah, Miami, Opa-Locka, and Miami Gardens



Climate & Heat Health Task Force

Goals:

- Prioritize short term actions
- Create framework for monitoring progress
- Equitable representation
- Best available science

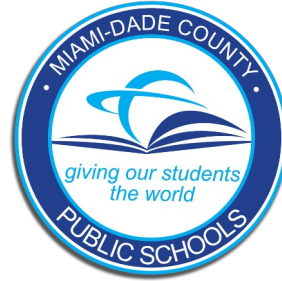
The Task Force included 15 appointed members representing local, state and fed govt, scientific experts, community orgs and health care professionals as well as two citizen members who will ensure community voices are heard and lifted up in the formation of the heat plan.

<https://miamifoundation.org/extremeheat/>





MIAMI BEACH



CC Collaboration is a critical asset



Extreme Heat Action Plan

Goal 1: Inform and Prepare People

- Heat Season Campaign
- Updated NWS thresholds and response protocols
- Outdoor Worker Protection
- Urban Heat Research Group

Goal 2: Cool our Homes and Emergency Facilities

Goal 3: Cool our Neighborhoods



THANK YOU!

Jane Gilbert

Chief Heat Officer

Miami-Dade County

Jane.Gilbert@miamidade.gov

www.miamidade.gov/heat



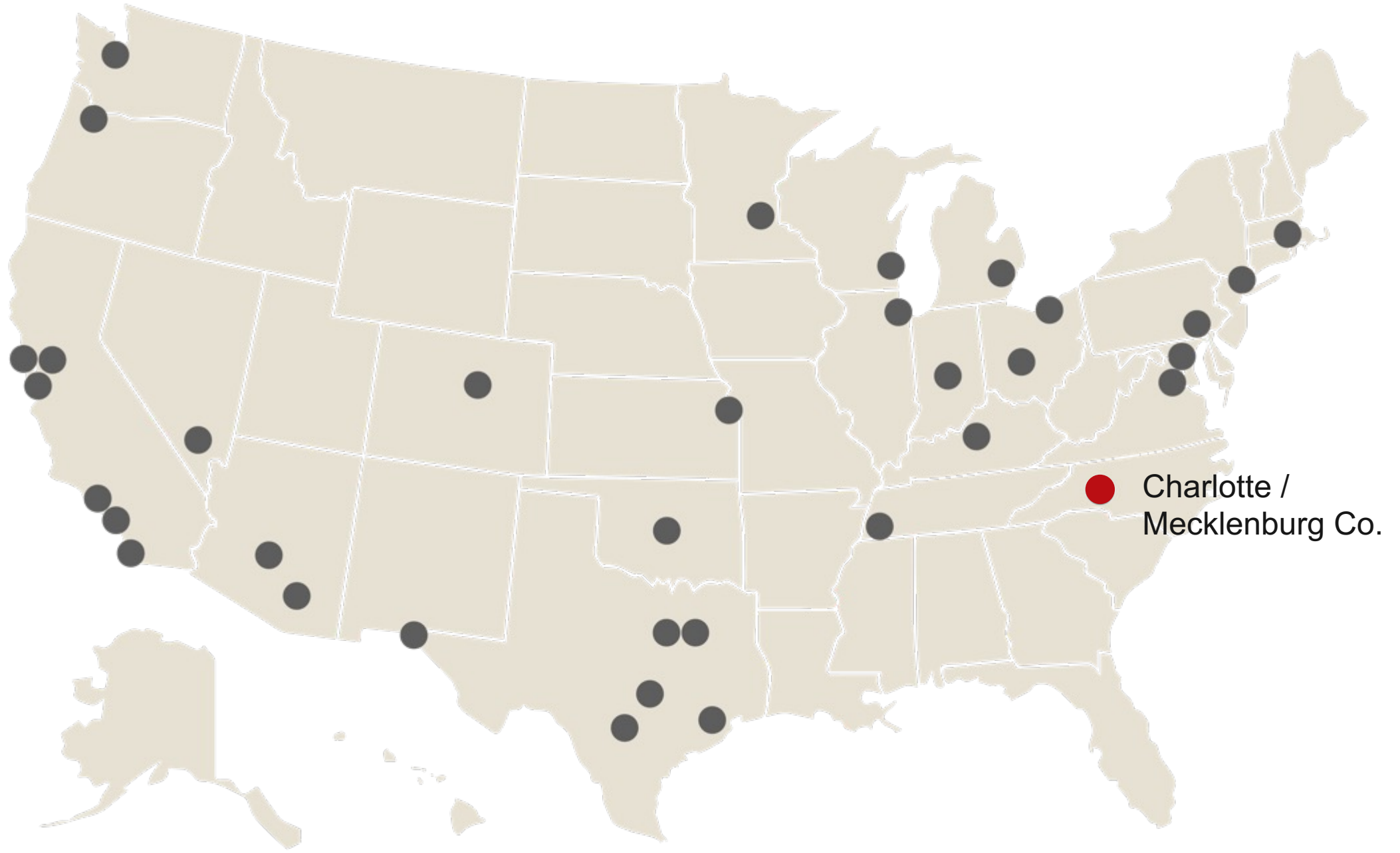
Sign up for the resilience newsletter: miamidade.gov/resilience



Raynard Washington, Ph.D., MPH

Public Health Director
Mecklenburg County, NC Public Health

health.mecknc.gov



Charlotte /
Mecklenburg Co.

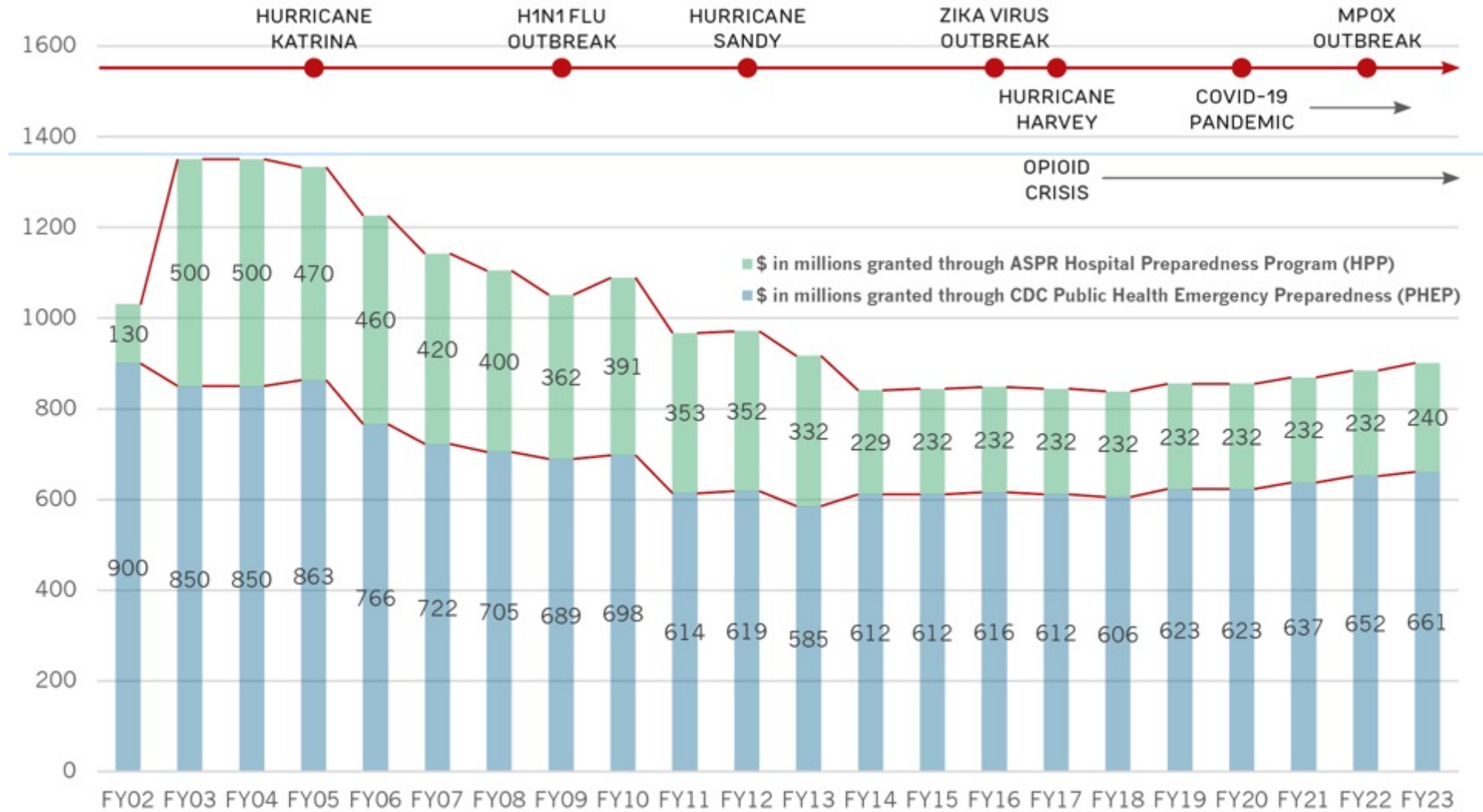
Local health departments — on the front lines of emergency preparedness



Local health departments must always be prepared for multiple health emergencies, not just infectious disease

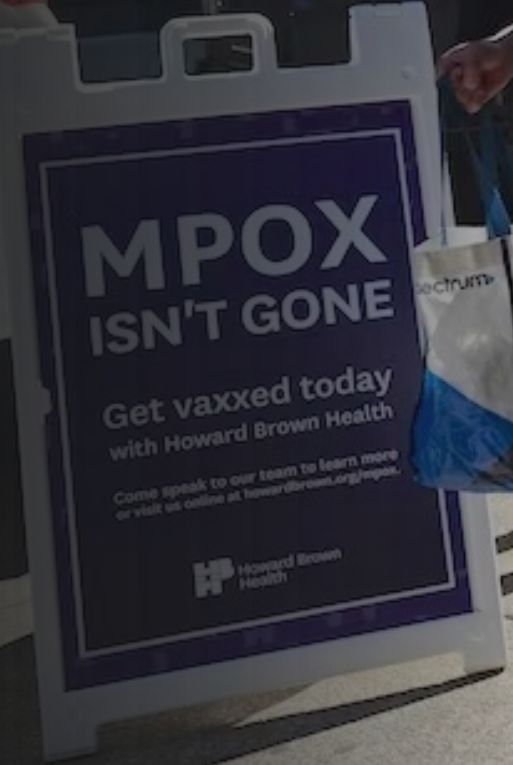


Despite a sharp increase in severe public health emergencies, preparedness funding has plummeted 30% since 2003.

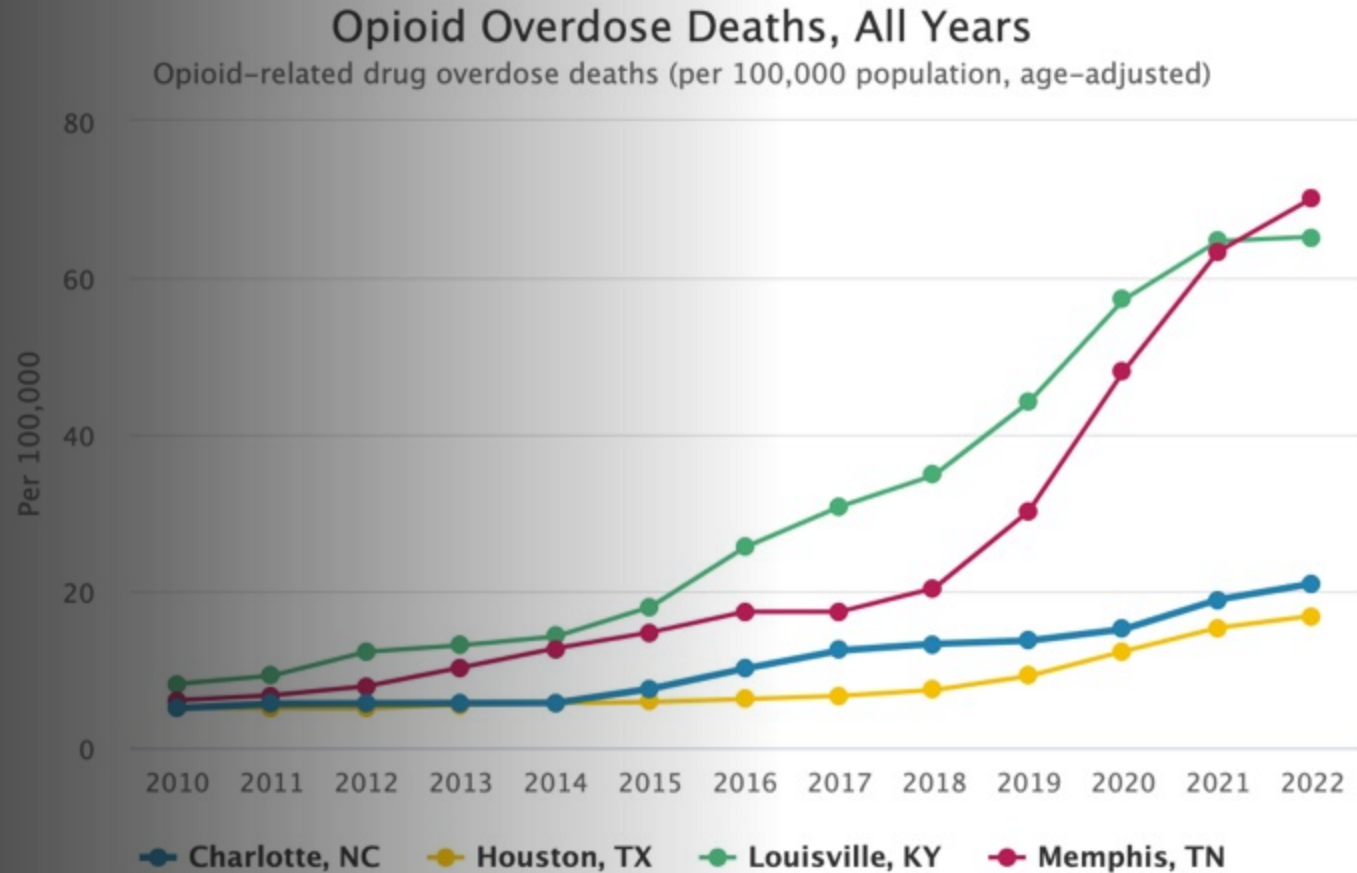


* Numbers based on amounts awarded not appropriated. Sources: [PHEP Cooperative Agreement Archive \(CDC\)](#); [Infectious Disease Threats \(GAO\)](#); [ASPR Health Care Readiness Programs Funding](#); [Public Health Preparedness \(GAO\)](#)

Congress should enact and fully fund a Vaccines for Adults program



All levels of governmental public health need ongoing support for data modernization





L. Brannon Traxler, M.D., MPH
Director of Health Promotion and Services &
Chief Medical Officer
South Carolina Department of Health &
Environmental Control

scdhec.gov



South Carolina Department of Health and Environmental Control

Ready or Not 2024:
Protecting the Public's Health from
Diseases, Disasters, and Bioterrorism

L. Brannon Traxler, MD, MPH
Director of Health Promotion and Services &
Chief Medical Officer, SC DHEC

Broad Nature of Emergencies

- Almost any significant emergency that affects a population has public health component
- Unpredictability of weather-related emergencies
- Also: infectious disease outbreaks, bioterrorism, any mass casualty incident

Sustainable & Flexible Funding

- Need to be able to adapt and respond quickly with existing funding
- Example: use of COVID-19 funding for mpox response



Robust & Resilient Supply Chain



- Examples seen during COVID-19 pandemic
- Not only supplies but also drugs/medications, especially antibiotics

Importance of Partnerships

- Cannot respond to population-level emergencies alone
- Within government and externally
- Example: agriculture, animal health, & human health during current response to avian influenza

CONTACT US

Dr. Brannon Traxler
btraxler@dhec.sc.gov

Stay Connected

Submit Questions for Our Panelists



Jane Gilbert
Chief Heat Officer
Miami-Dade County
Office of Resilience



Raynard Washington, Ph.D.,
MPH
Public Health Director
Mecklenburg County
NC Public Health

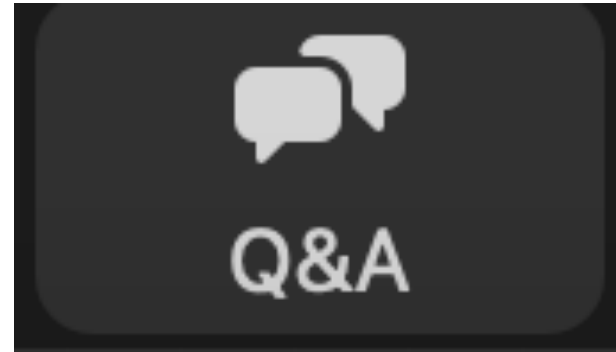


L. Brannon Traxler, M.D.,
MPH
Director of Health Promotion and
Services & Chief Medical Officer
South Carolina Department of
Health & Environmental Control



Q&A Feature

1. At the bottom of your screen, click to open the Q&A panel
2. Type your question in the Q&A box
3. Hit Enter



Thank You to Our Moderator and Panelists



**J. Nadine Gracia, M.D.,
MSCE**
President and CEO
Trust for America's Health



Jane Gilbert
Chief Heat Officer
Miami-Dade County
Office of Resilience



**Raynard Washington, Ph.D.,
MPH**
Public Health Director
Mecklenburg County,
NC Public Health



**L. Brannon Traxler, M.D.,
MPH**
Director of Health Promotion
and Services
& Chief Medical Officer
South Carolina Department of
Health & Environmental Control



Thank you!

@HealthyAmerica1 

The recording and slides will be available at tfah.org

